



REGIONAL DISTRICT OF CENTRAL KOOTENAY

Evacuation Order

DATE: August 10, 2018

TIME: 15:30hrs

An Evacuation Order has been issued by the Regional District of Central Kootenay Emergency Operations Centre (EOC).

Due to the potential danger to life and health from the McArthur Creek wildfire, an Evacuation Order has been issued for the following addresses (see attached map):

2245 Sheep Creek Road

2259 Sheep Creek Road

2345 Sheep Creek Road

Further information will be issued should the situation change.

Please visit www.rdck.ca for information or call the Central Kootenay Emergency Operation Centre: 250-352-7701.



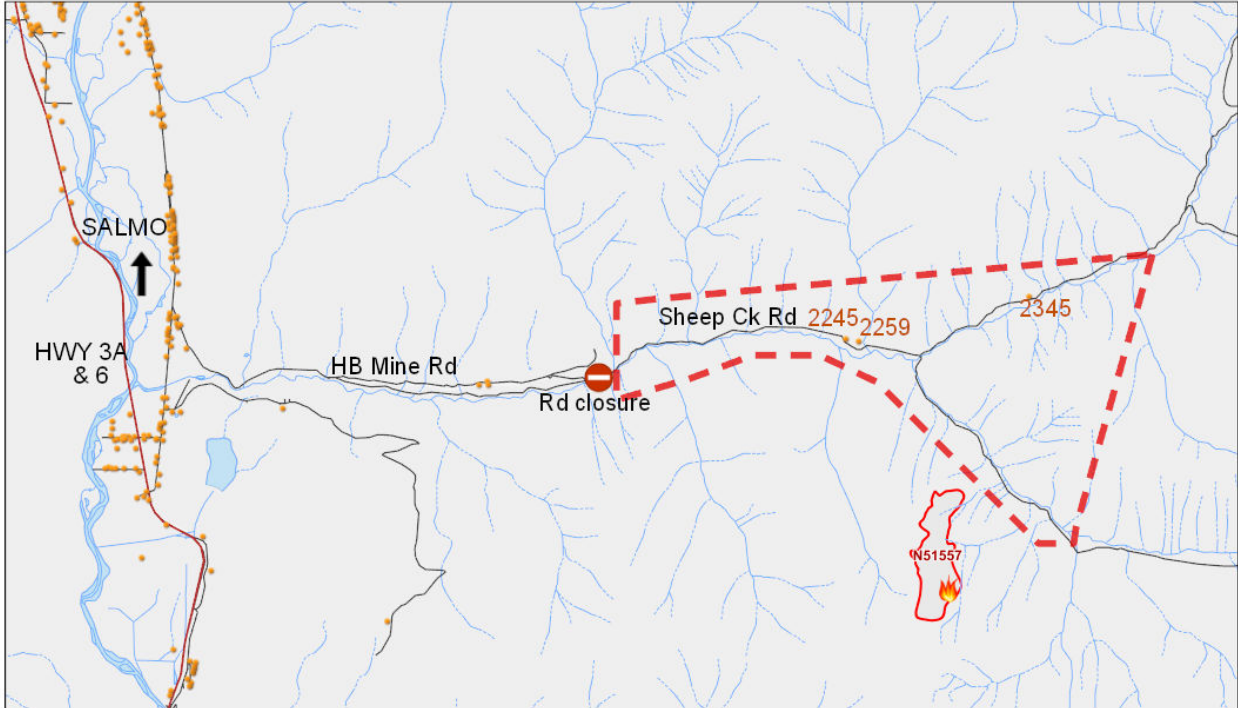
EOC Director



REGIONAL DISTRICT OF CENTRAL KOOTENAY

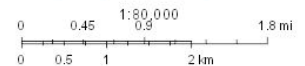
Evacuation Order

McArthur Creek Wildfire Evacuation Order



8/10/2018, 3:34:55 PM

- | | | | |
|--------------|-------------------------------|--------------------|----------------------------|
| Points | ● Civic Address - Small Scale | ■ Evacuation Areas | ■ Fire of Note |
| ↑ Override 1 | — Highways | — Roads | ● New |
| ○ Override 2 | | | ● Active |
| | | | ● Fire Locations - Current |
| | | | ● Not Active |



Esri, HERE, Garmin, © OpenStreetMap contributors, and the GIS user community

RDCK GIS Department
Esri, HERE, Garmin, NGA, USGS, NRCan | Esri, HERE |