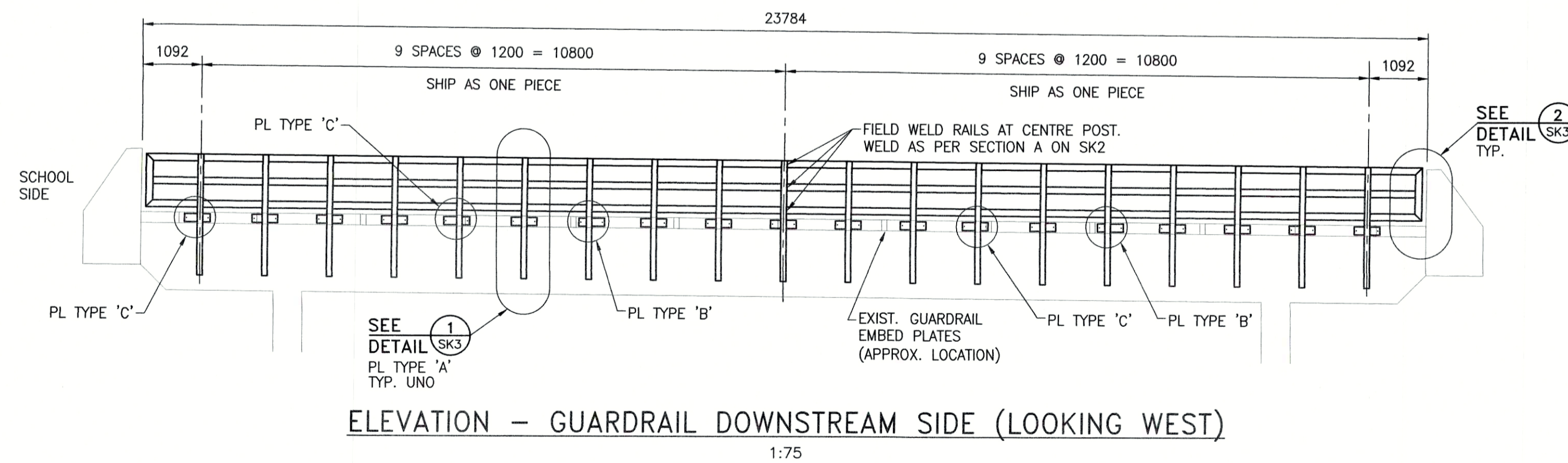
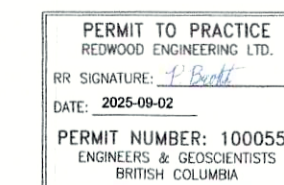


NTS





FOR NOTES SEE DWG. 24E159-SK1

[illegible]

REDWOOD
ENGINEERING LTD

Trail, B.C. Canada
tel(250)364-1668
fax(250)364-1994
www.redwoodengineering.com

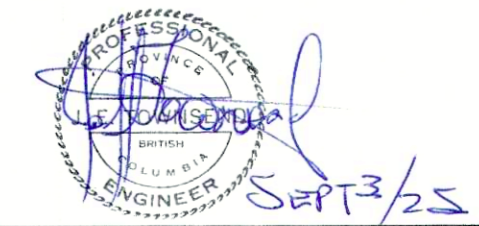
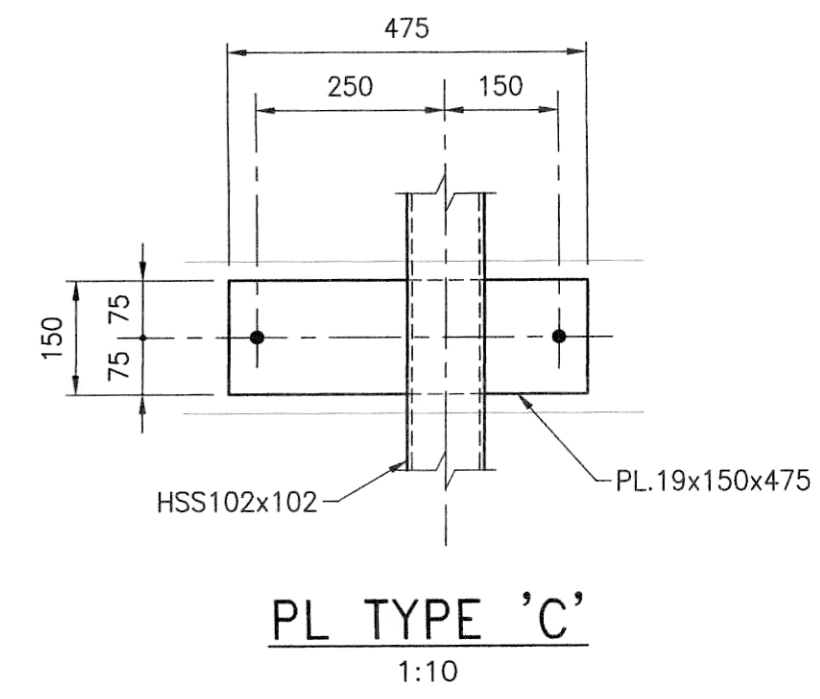
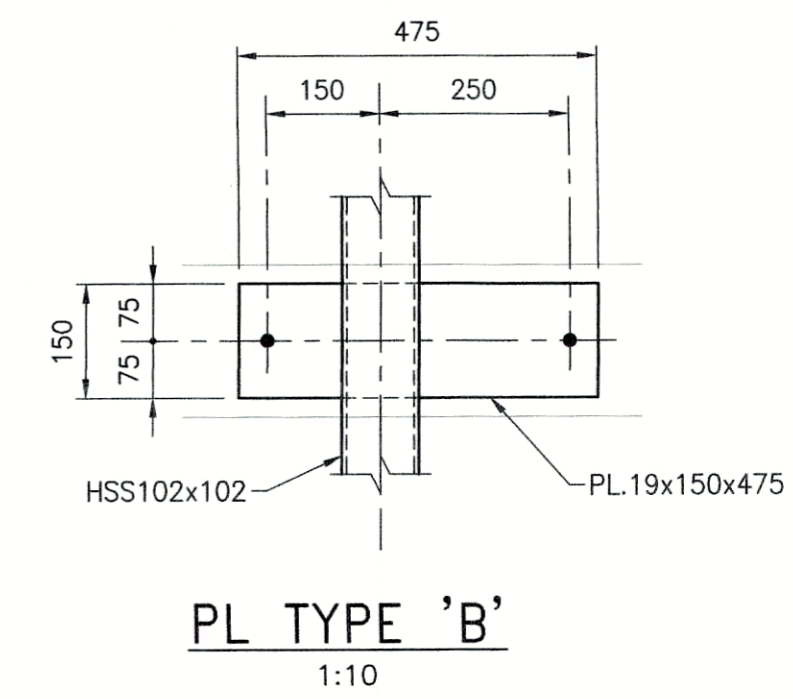
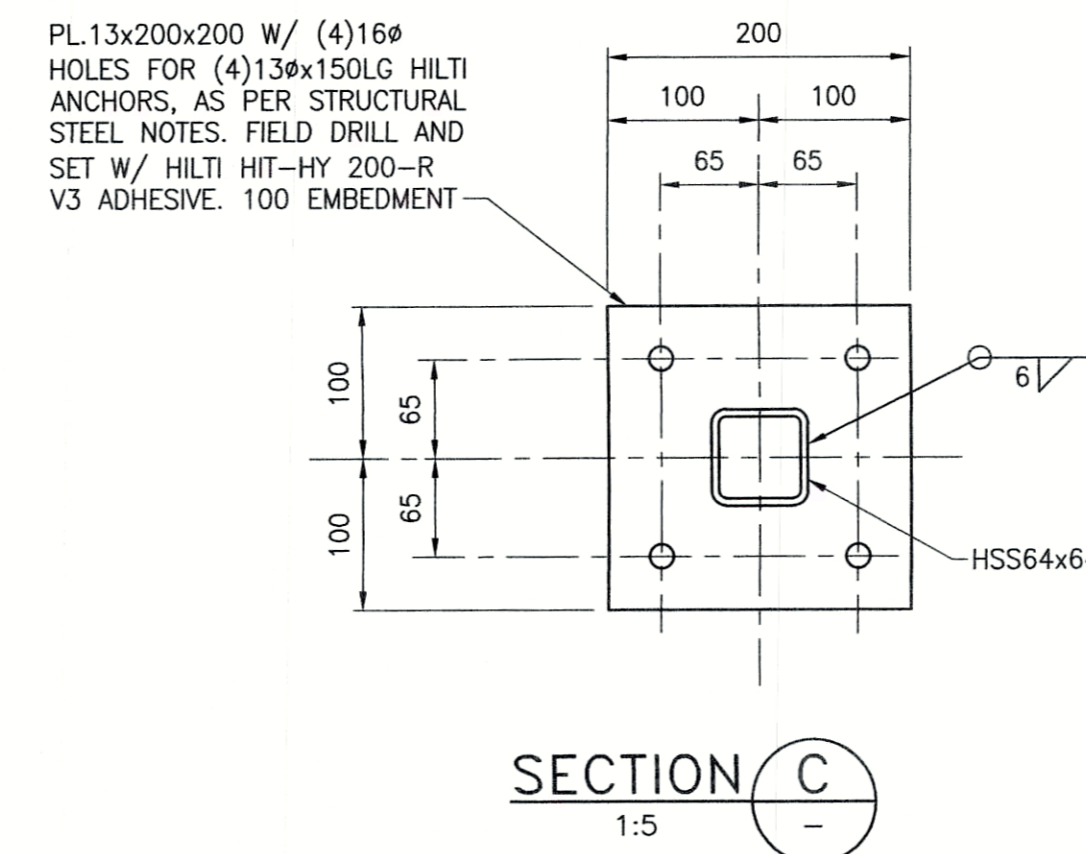
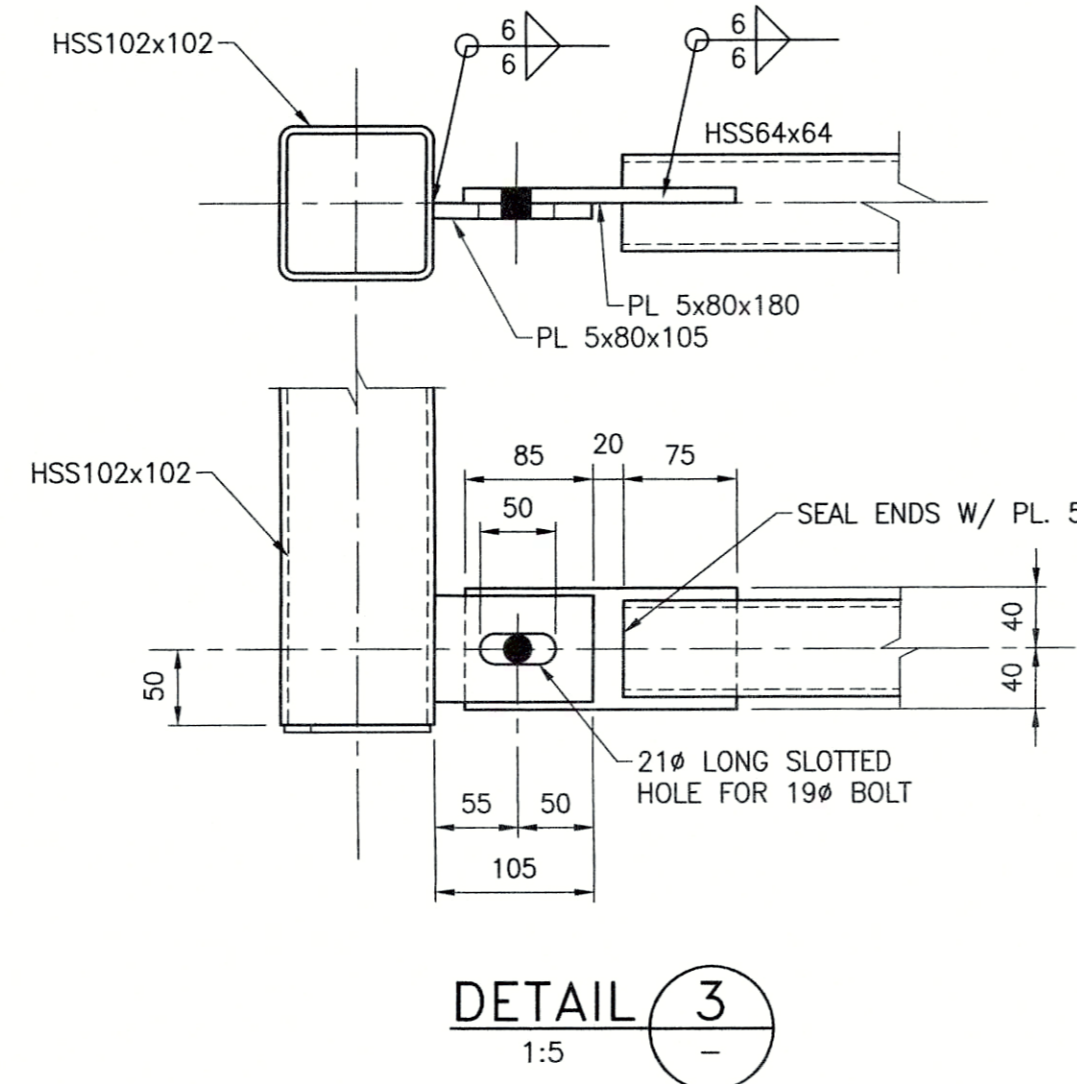
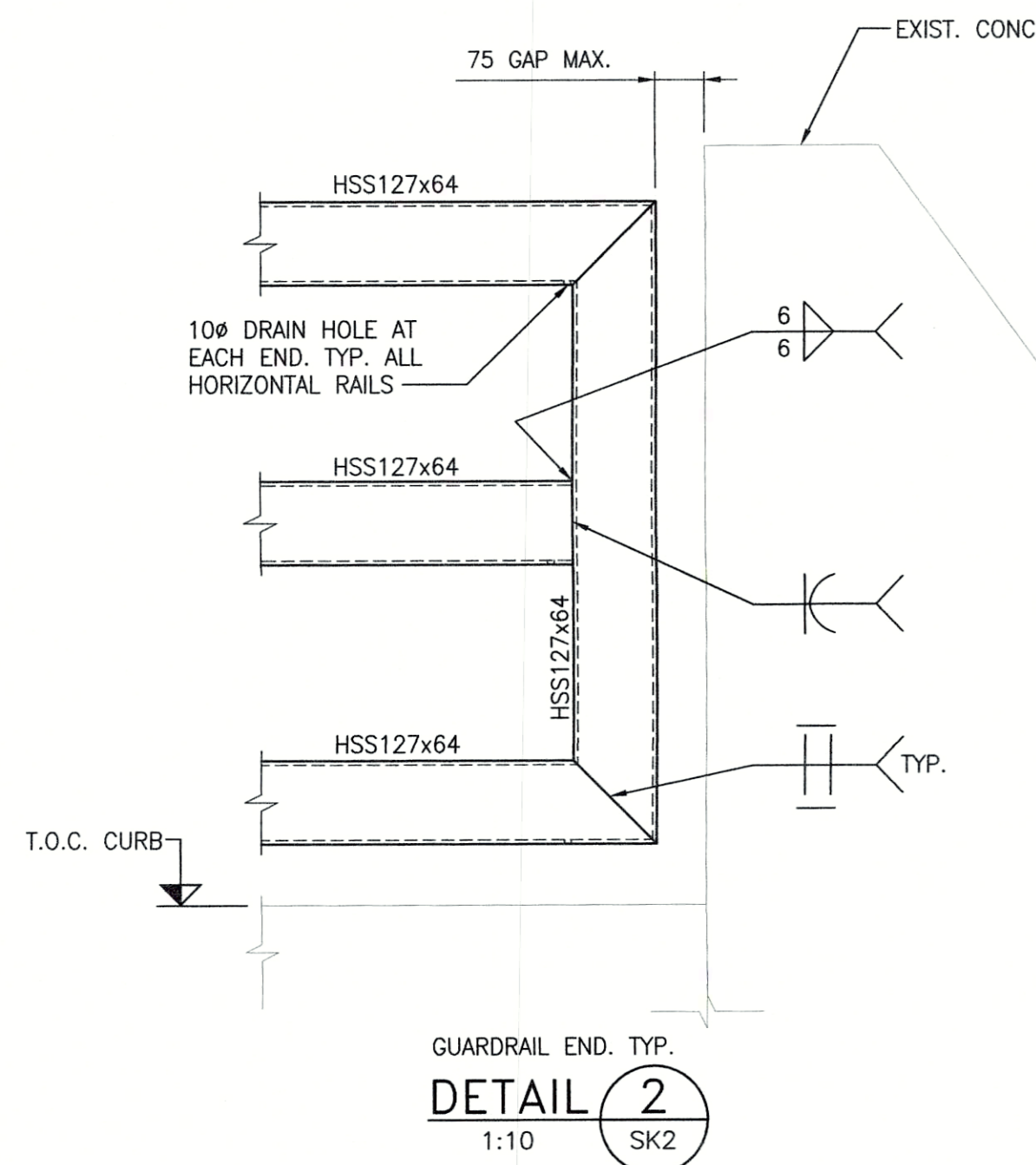
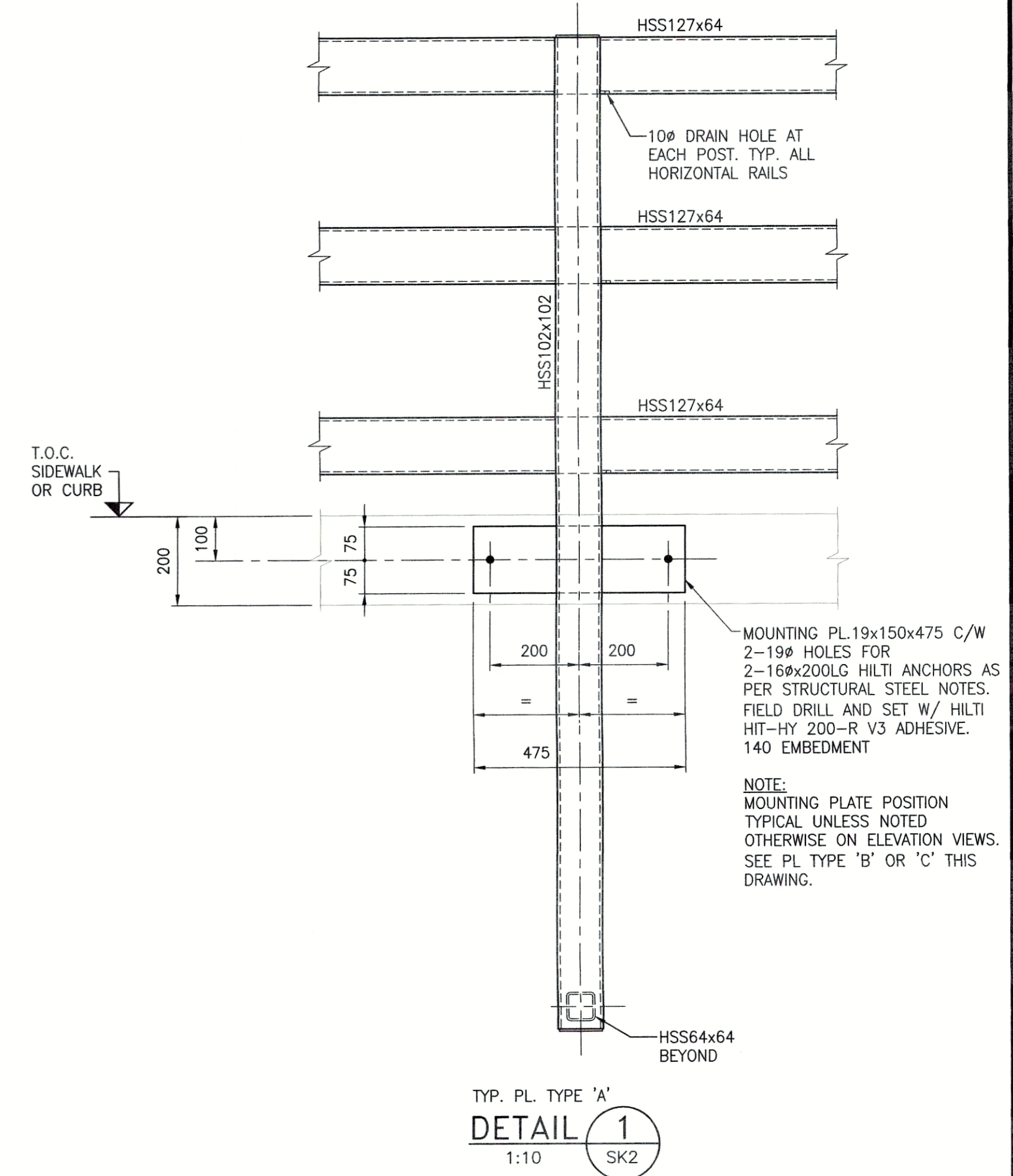
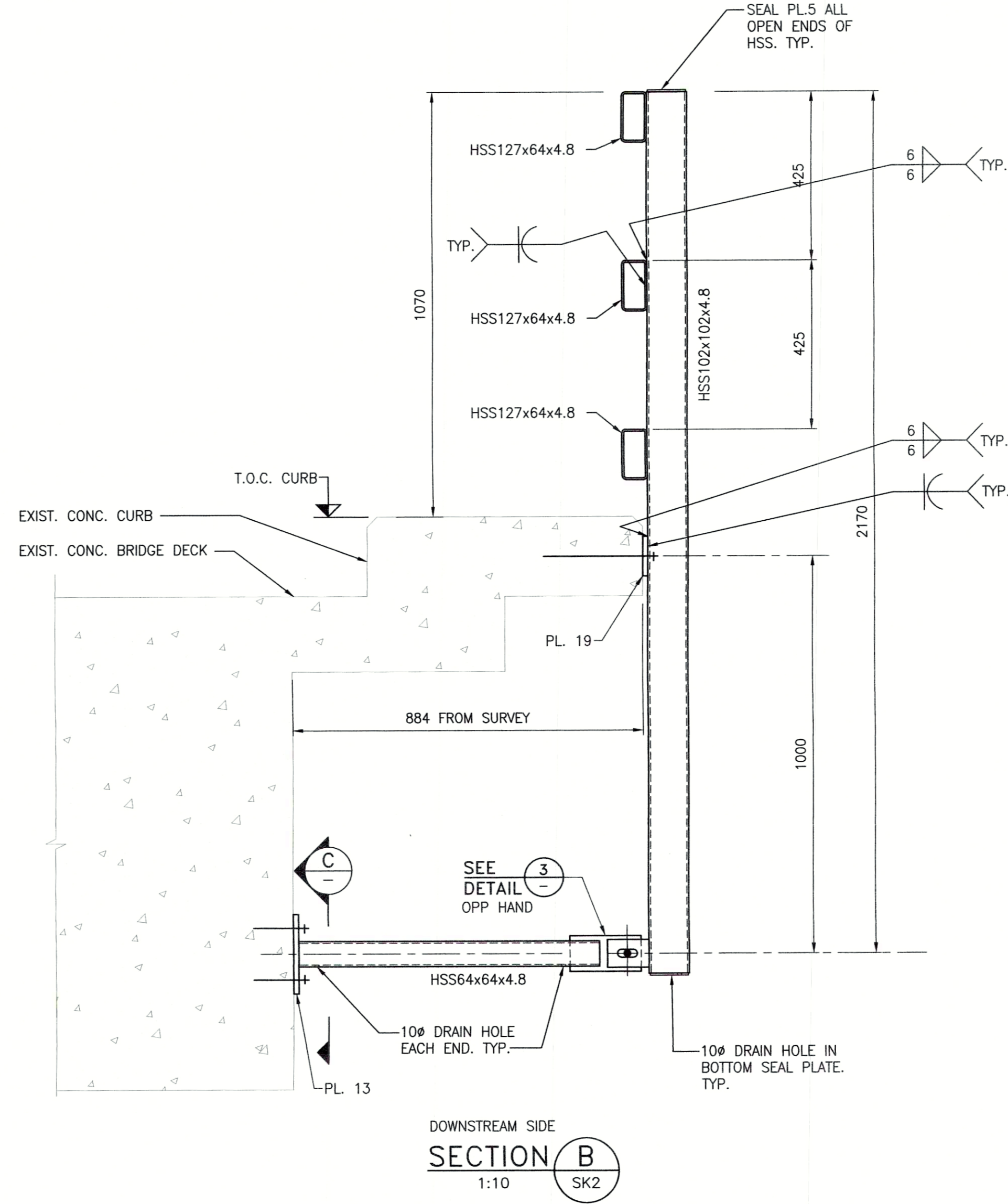
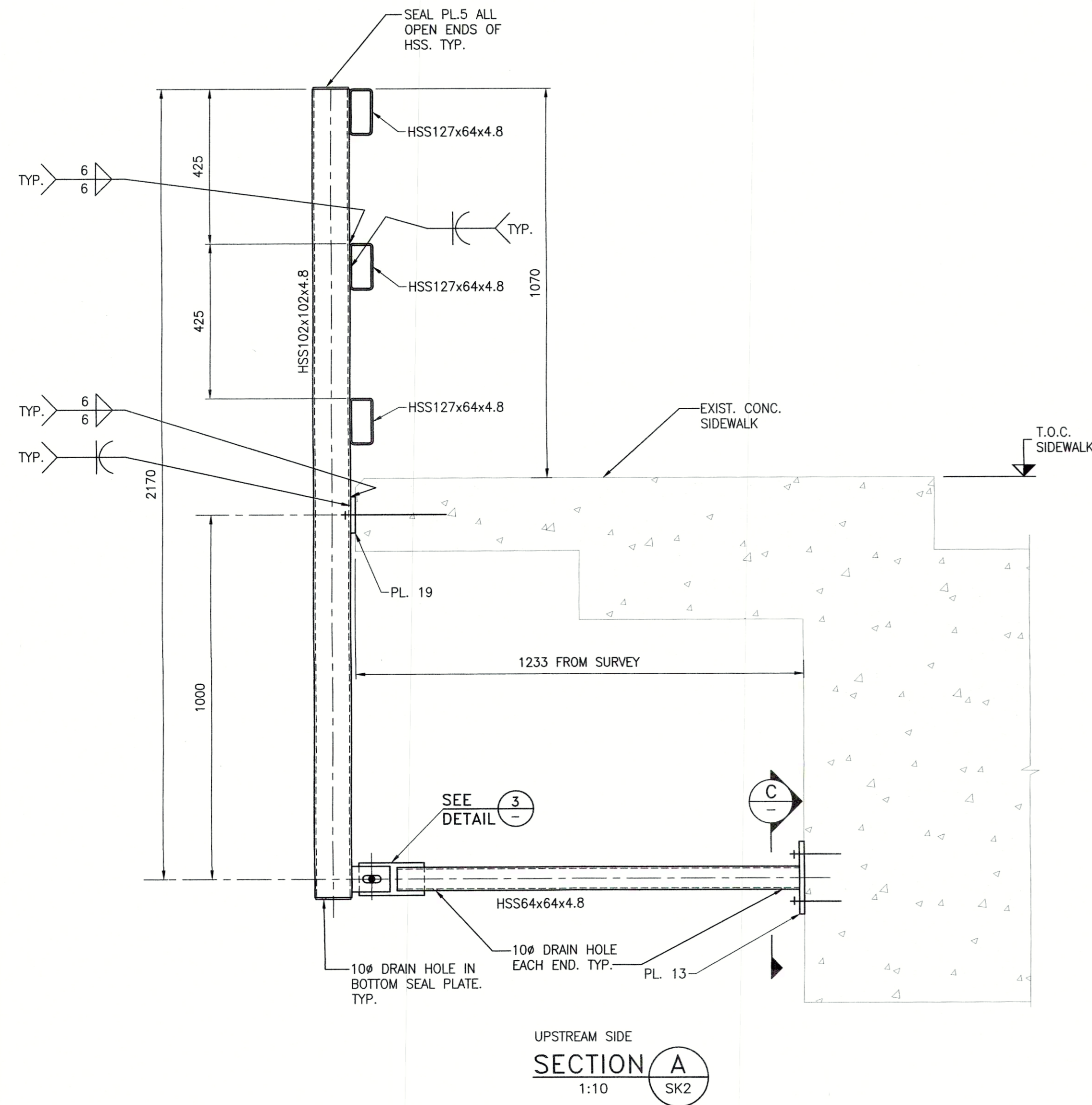
TITLE

GLENDALE AVE, SALMO, BC
ERIE CREEK BRIDGE CROSSING
GUARDRAILS
PLAN & ELEVATIONS

PROJECT NUMBER:	
SCALE AS NOTED	PROJECT NUMBER 24E159

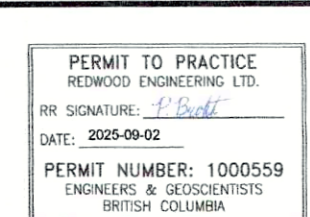
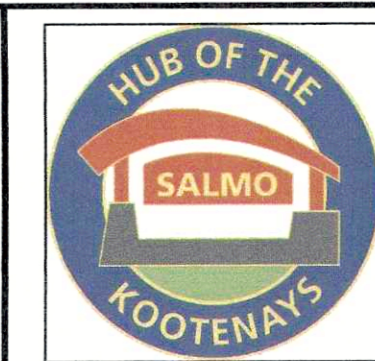
DWG. NO. 24E159-SK2

0



FOR NOTES SEE DWG. 24E159-SK1

0	ISSUE FOR CONSTRUCTION	2025/09/03	C.CALDERBANK	T.SUKKAU	J.TOWNSEND	1	24E159-SK1 THROUGH SK3	GLLENDALE BRIDGE SLAB AND RIP RAP REPAIR DRAWINGS	ENGINEERING REVIEW
1	REVISION DESCRIPTION	DATE	BY	CHK'D	APP'D	NO.	DWG. NO.	REFERENCE DRAWINGS	ENGINEERING REVIEW



PROJECT NUMBER:
SCALE AS NOTED PROJECT NUMBER 24E159

REDWOOD ENGINEERING LTD
Trail, B.C. Canada
tel(250)364-1688
fax(250)364-1994
www.redwoodengineering.com

TITLE
GLLENDALE AVE, SALMO, BC
ERIE CREEK BRIDGE CROSSING
GUARDRAILS
SECTIONS & DETAILS

DWG. NO. 24E159-SK3

REV. 0