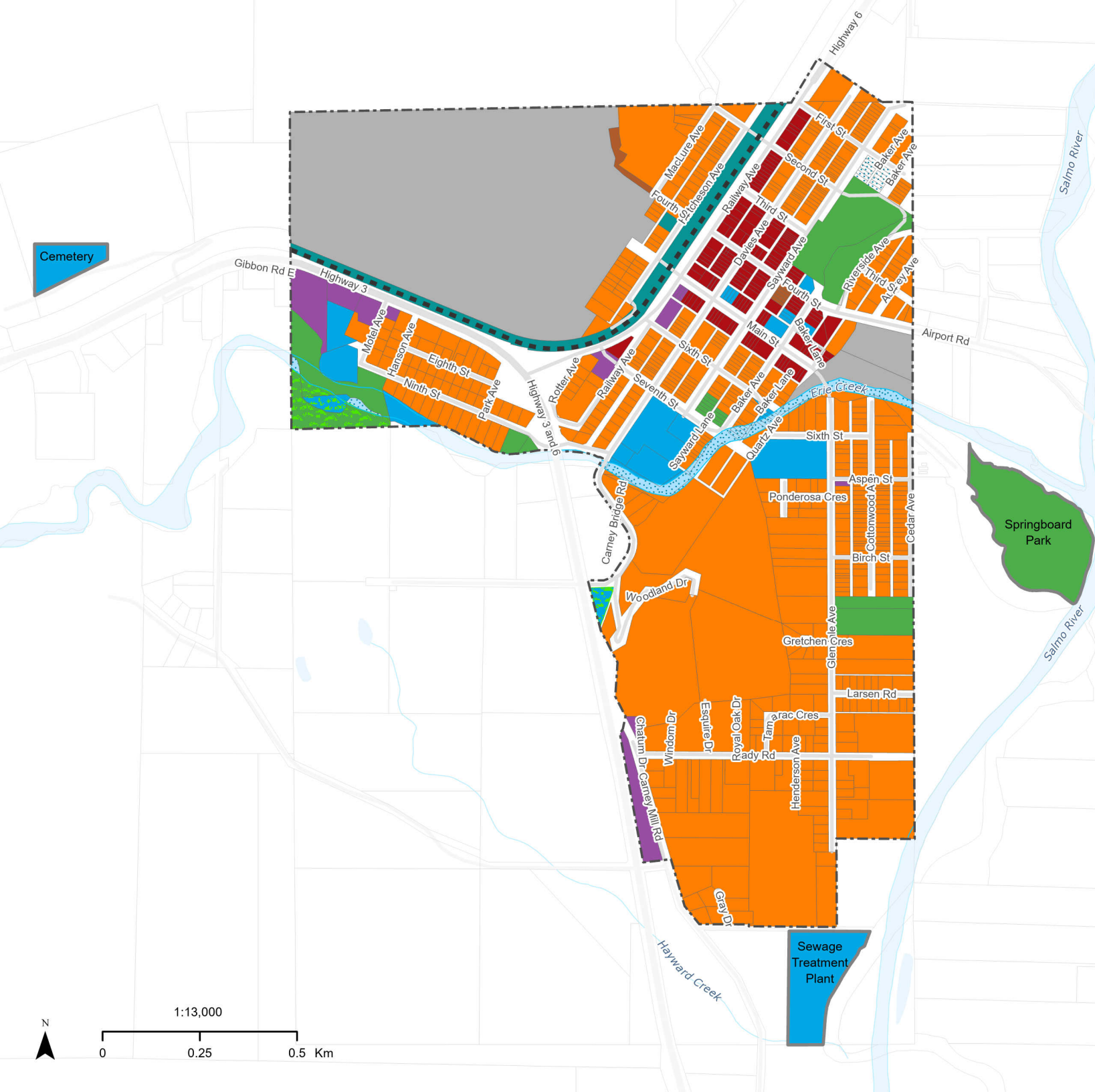




Village of Salmo

Official Community Plan
Bylaw 769
Schedule B
Land Use Designations



- Salmo Boundary
 - Parcel
 - Assets Outside Village
 - Salmo ALR
 - Waterbody
 - Stream or River Shoreline
 - Highway
 - Road
 - Rail Trail
- Land Use Designation**
- Core Commercial (CC)
 - Mixed Use Commercial (MUC)
 - Service Commercial (SC)
 - Environmental Reserve (ER)
 - Institutional (I)
 - Neighbourhood Residential (NR)
 - Parks and Recreation (P)
 - Public Utility (PU)
 - Rural Resource (RR)

The map data shown are approximate representations for reference purposes only. The Regional District of Central Kootenay is not liable for any errors or omissions on this map nor any loss or damage resulting from its use.

April 23, 2026
Size: 8.5 x 11"

PCS: NAD83/UTM Zone 11N
Author: Chenoa McLean

Cemetery

Springboard Park

Sewage Treatment Plant

1:13,000

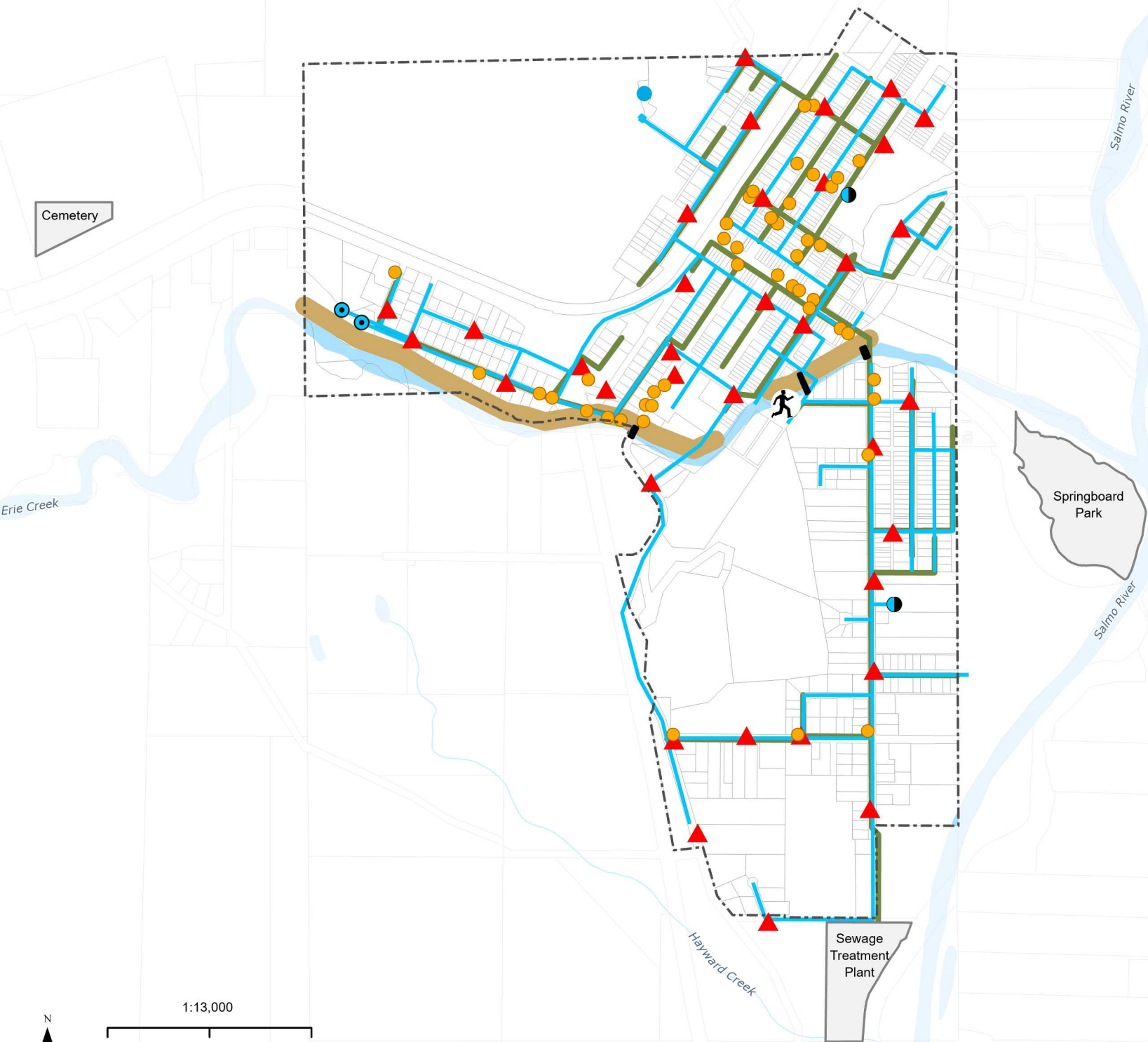
0 0.25 0.5 Km





Village of Salmo

Official Community Plan
Bylaw 769
Schedule C
Village Infrastructure



- Salmo Boundary
- Parcel
- Assets Outside Village
- Waterbody
- Stream
- Wells**
 - Closed
 - Operational
 - Reservoir
 - Catch Basin
 - Hydrant
 - Main Line
 - Sanitary Sewer
 - Dike
 - Bridge
 - Pedestrian Bridge



1:13,000

0 0.25 0.5 Km

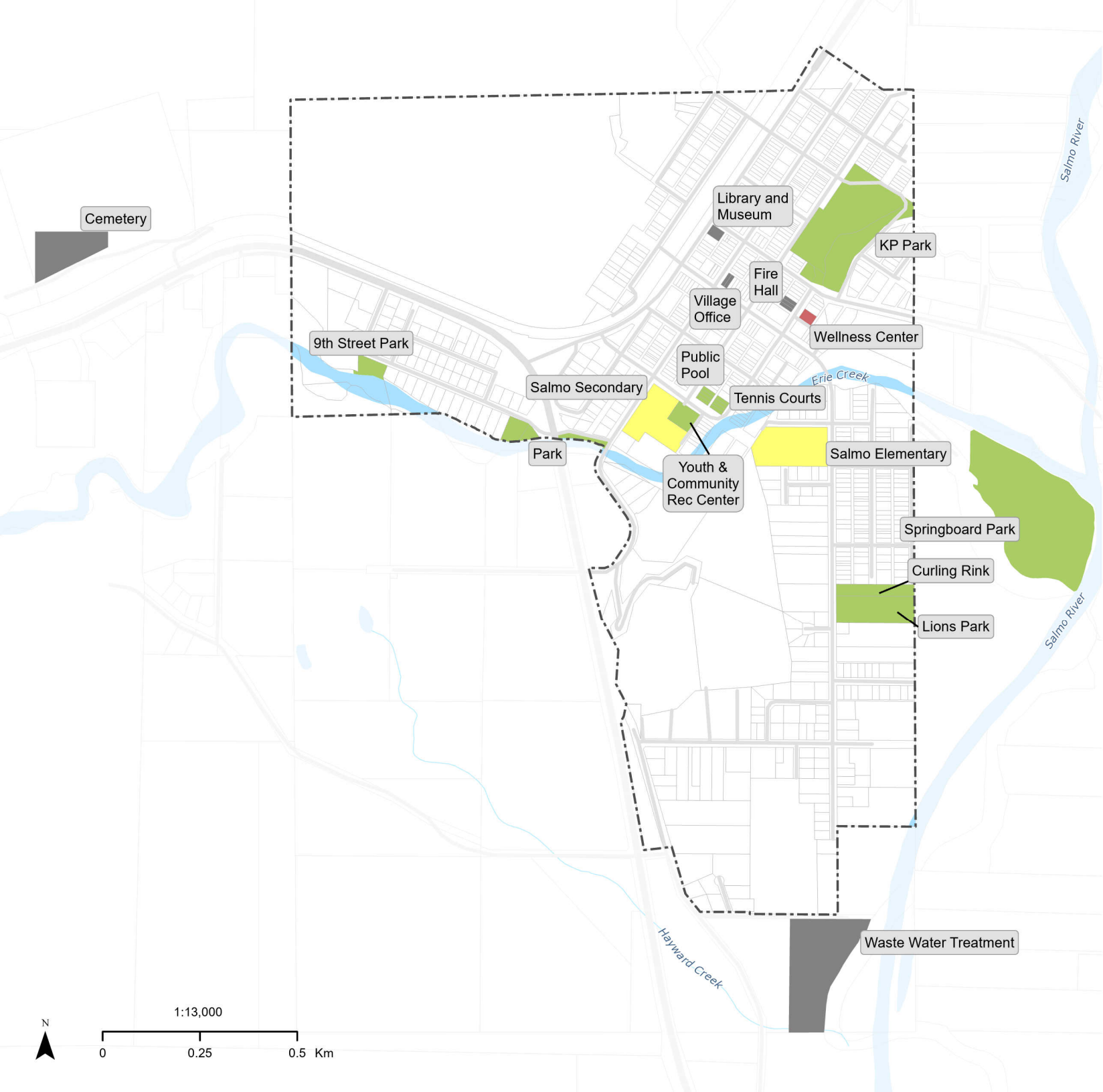
The map data shown are approximate representations for reference purposes only. The Regional District of Central Kootenay is not liable for any errors or omissions on this map nor any loss or damage resulting from its use.

March 05, 2026
Size: 8.5 x 11"
PCS: NAD83/UTM Zone 11N
Author: Chenoa McLean



Village of Salmo

Official Community Plan
Bylaw 769
Schedule D
Current Civic, Facilities,
Parks and Institutions



- Salmo Boundary
- Parcel
- Waterbody
- Stream
- Highway
- Road
- Facilities**
- Civic
- Education
- Medical
- Recreation



1:13,000

0 0.25 0.5 Km









The map data shown are approximate representations for reference purposes only. The Regional District of Central Kootenay is not liable for any errors or omissions on this map nor any loss or damage resulting from its use.

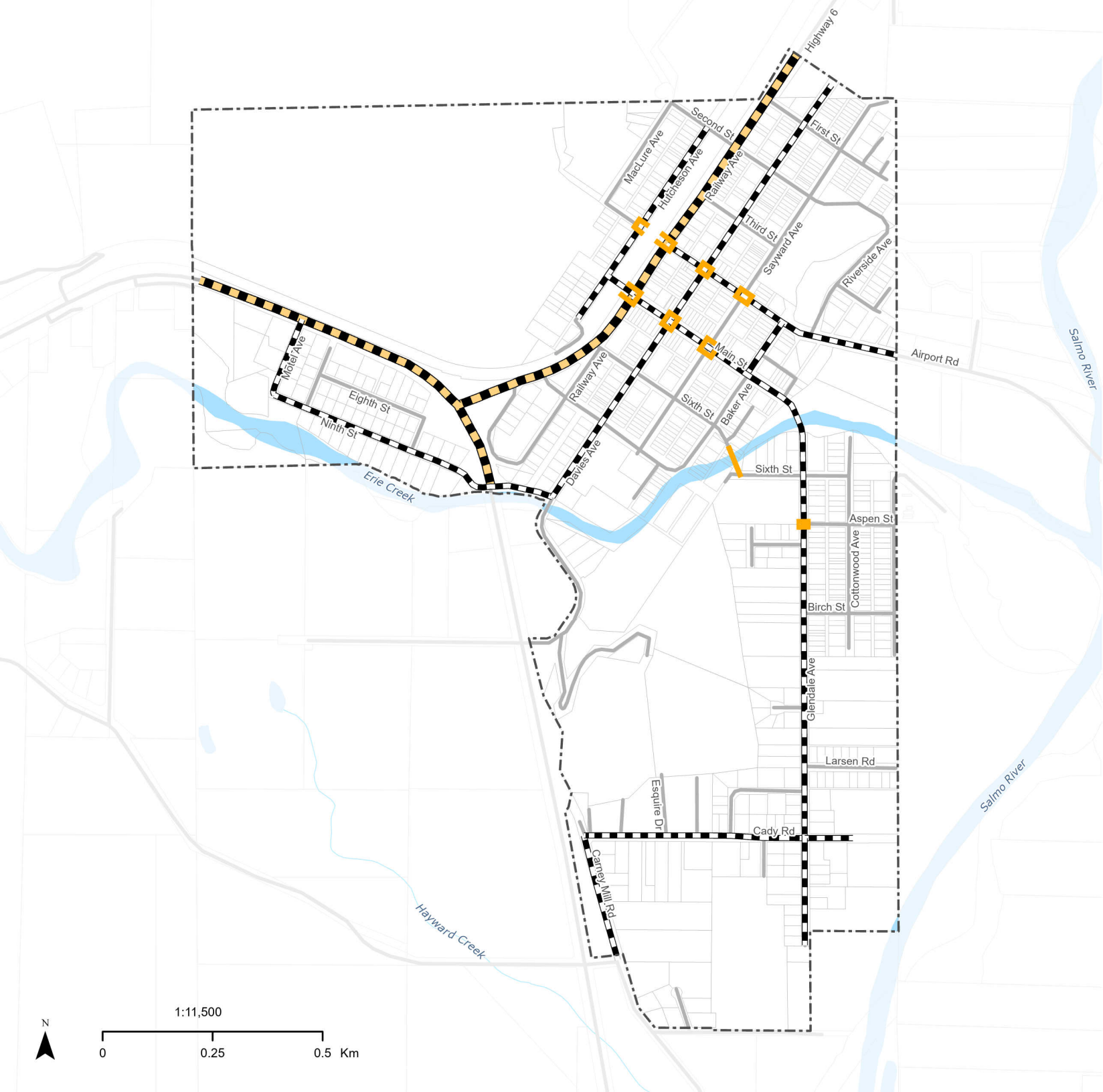
April 24, 2026
Size: 8.5 x 11"
PCS: NAD83/UTM Zone 11N
Author: Chenoa McLean



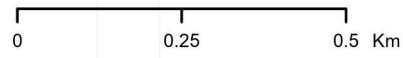
Village of Salmo

Official Community Plan
Bylaw 769
Schedule E
Road Network

-  Salmo Boundary
-  Parcel
-  Waterbody
-  Stream
- Road Network**
-  Provincial Arterial Highway
-  Village Arterial Street
-  Pedestrian Crossing
-  Road



1:11,500



The map data shown are approximate representations for reference purposes only. The Regional District of Central Kootenay is not liable for any errors or omissions on this map nor any loss or damage resulting from its use.

April 23, 2026
Size: 8.5 x 11"
PCS: NAD83/UTM Zone 11N
Author: Chenoa McLean

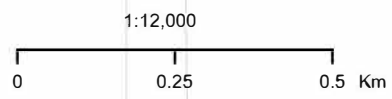


Village of Salmo

Official Community Plan
Bylaw 769
Schedule F
Civic Greenspace and Parks



- Salmo Boundary
- Parcel
- Waterbody
- Stream
- Highway
- Road
- Environmental Reserve
- Parks and Greenspace
- Salmo ALR



The map data shown are approximate representations for reference purposes only. The Regional District of Central Kootenay is not liable for any errors or omissions on this map nor any loss or damage resulting from its use.

March 06, 2026
Size: 8.5 x 11"
PCS: NAD83/UTM Zone 11N
Author: Chenoa McLean



Village of Salmo

Official Community Plan
Bylaw 769
Schedule G
Walking Routes,
Benches & Sidewalks

- Salmo Boundary
- Parcel
- Waterbody
- Stream
- Highway
- Road
- Park Bench
- Walking Route
- Sidewalk



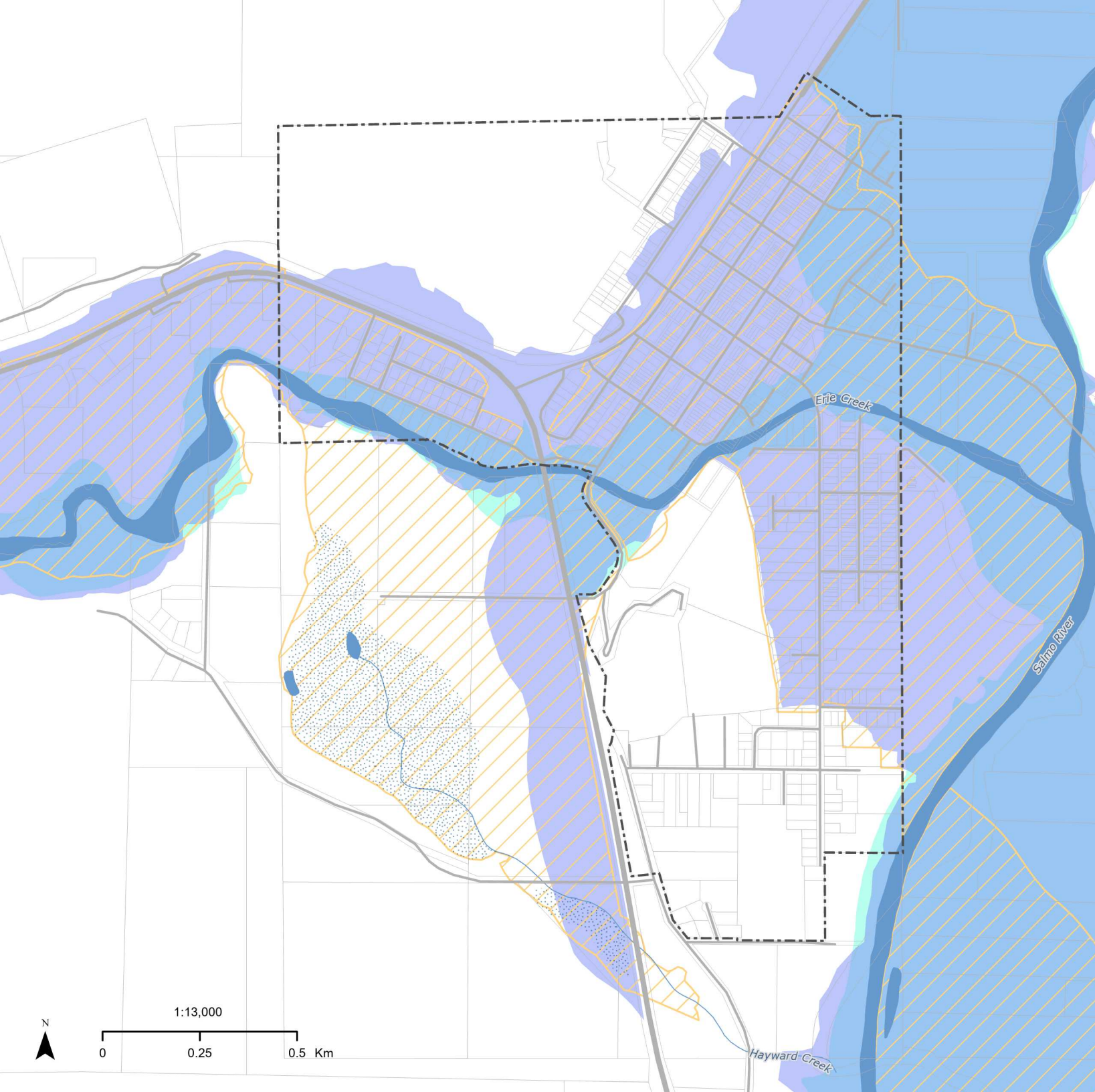
The map data shown are approximate representations for reference purposes only. The Regional District of Central Kootenay is not liable for any errors or omissions on this map nor any loss or damage resulting from its use.

April 24, 2026
Size: 8.5 x 11"
PCS: NAD83/UTM Zone 11N
Author: Chenoa McLean



Village of Salmo

Official Community Plan
Bylaw 769
Schedule H1
Floodplain and Non Standard
Flooding Erosion Area



- Salmo Boundary
- Waterbody
- Wetland
- Stream
- Highway
- Road
- Non Standard Flooding Erosion Area
- 2020 Clearwater Flood Construction Levels
- 1990 Flood Construction Levels
- Parcel

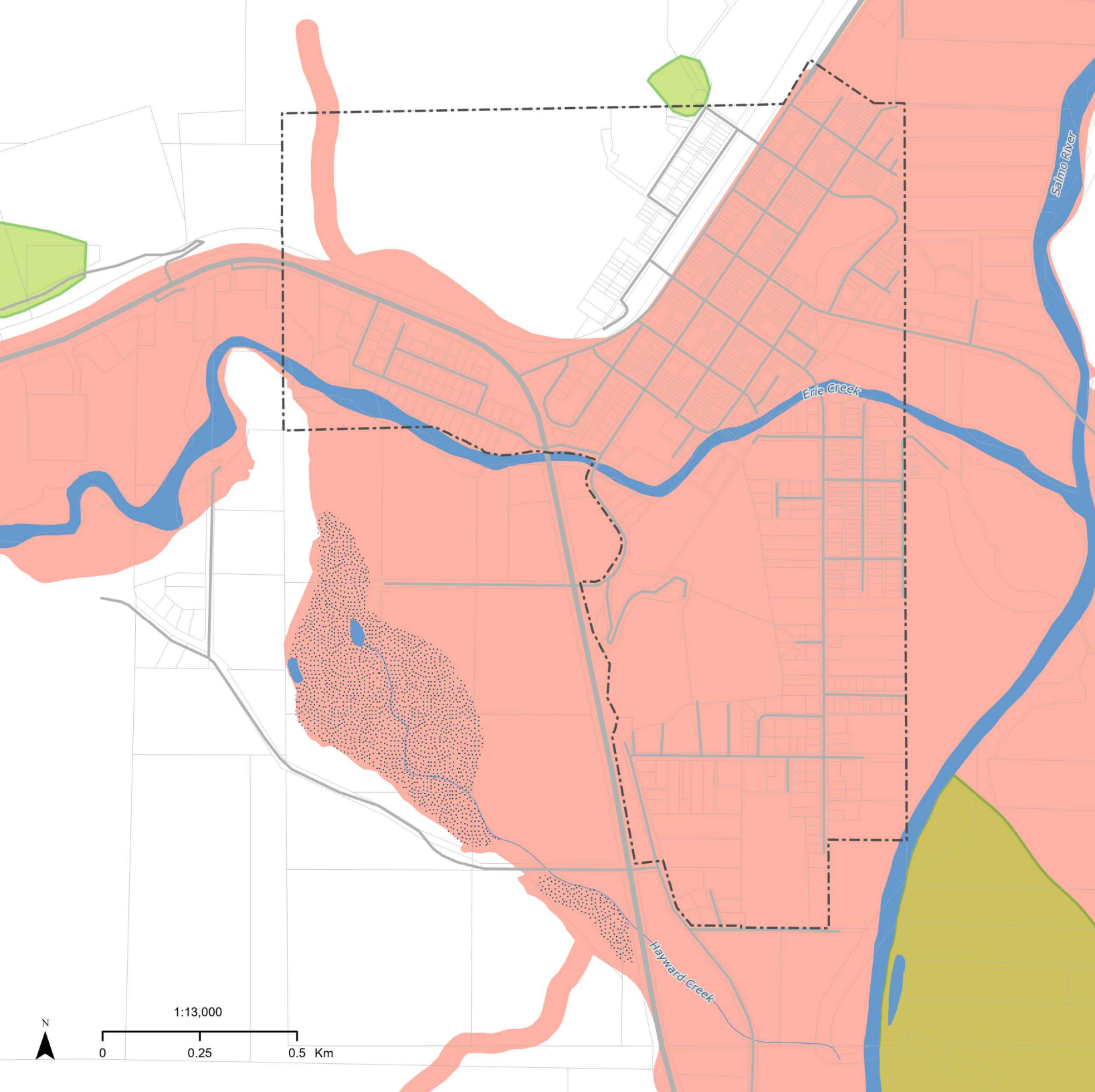
The map data shown are approximate representations for reference purposes only. The Regional District of Central Kootenay is not liable for any errors or omissions on this map nor any loss or damage resulting from its use.

March 06, 2026
Size: 8.5 x 11"
PCS: NAD83/UTM Zone 11N
Author: Chenoa McLean



Village of Salmo

Official Community Plan
Bylaw 769
Schedule H2
Steep Creek and
Clearwater Flood Hazard



--- Salmo Boundary

Waterbody

Wetland

Stream

Highway

Road

Steep Creek Hazard Priority

High

Moderate

Low

Very Low

Clearwater Flood Hazard Priority

High

Moderate

Low

Parcel



1:13,000



The map data shown are approximate representations for reference purposes only. The Regional District of Central Kootenay is not liable for any errors or omissions on this map nor any loss or damage resulting from its use.

March 06, 2026
Size: 8.5 x 11"
PCS: NAD83/UTM Zone 11N
Author: Chenoa McLean



1:4,000
0 0.25 0.5 Km



Village of Salmo

Official Community Plan
Bylaw 769
Schedule I
Downtown Revitalization
Development Permit Area

-  Salmo Boundary
-  Parcel
-  Waterbody
-  Road
-  Downtown Revitalization DPA





The map data shown are approximate representations for reference purposes only. The Regional District of Central Kootenay is not liable for any errors or omissions on this map nor any loss or damage resulting from its use.

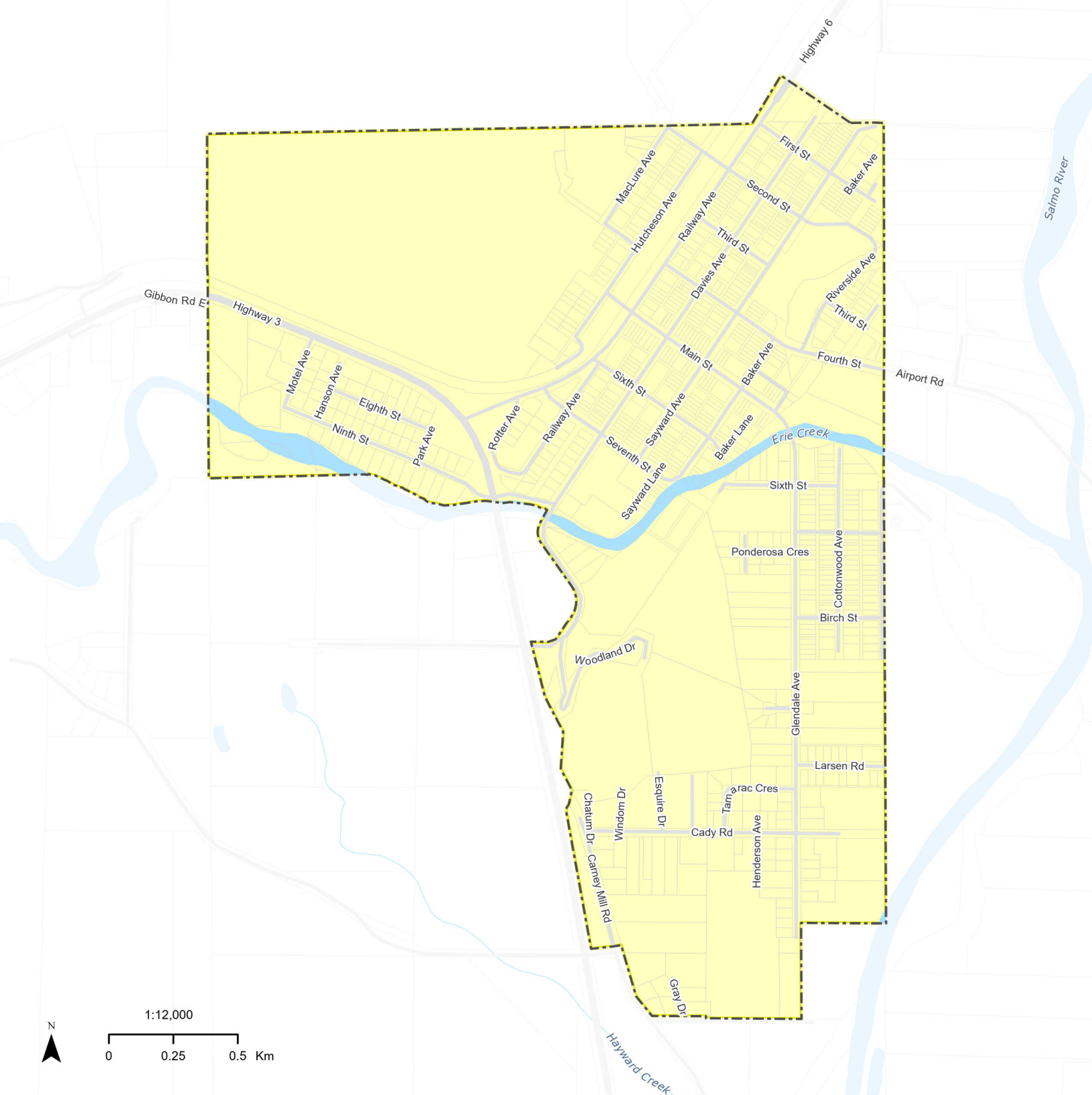
April 24, 2026
Size: 8.5 x 11"
PCS: NAD83/UTM Zone 11N
Author: Chenoa McLean



Village of Salmo

Official Community Plan
Bylaw 769
Schedule J
Aquifer Protection
Development Permit Area

-  Salmo Boundary
-  Parcel
-  Waterbody
-  Stream
-  Highway
-  Road
-  Aquifer Protection DPA












The map data shown are approximate representations for reference purposes only. The Regional District of Central Kootenay is not liable for any errors or omissions on this map nor any loss or damage resulting from its use.

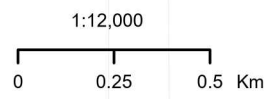
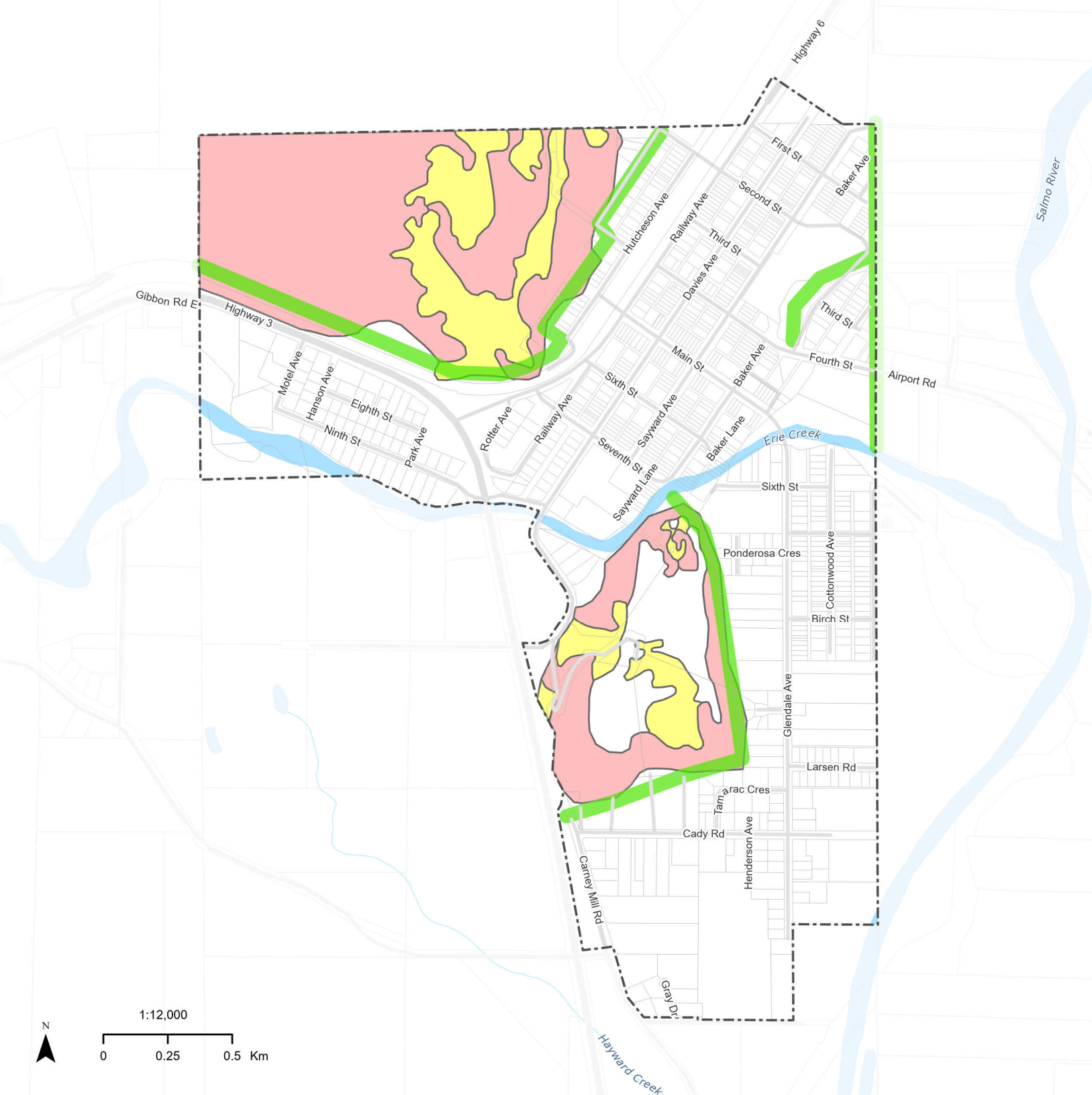
April 24, 2026
Size: 8.5 x 11"
PCS: NAD83/UTM Zone 11N
Author: Chenoa McLean



Village of Salmo

Official Community Plan
Bylaw 769
Schedule K
Natural Hazards
Development Permit Areas

-  Salmo Boundary
-  Parcel
-  Waterbody
-  Stream
-  Highway
-  Road
-  Wildfire Interface Area
- Steep Slope
 -  > 20% - 30% Slope
 -  > 30% Slope



The map data shown are approximate representations for reference purposes only. The Regional District of Central Kootenay is not liable for any errors or omissions on this map nor any loss or damage resulting from its use.

April 24, 2026
Size: 8.5 x 11"
PCS: NAD83/UTM Zone 11N
Author: Chenoa McLean