



## Village of Salmo Parks Sidewalk Expansion- Request for Proposal

The Village of Salmo is looking to install new sidewalks at 2 different parks in Salmo: KP Park, located at 215 Sayward Avenue & Lion's Park, located at 1017 Glendale Avenue. The sidewalks will provide better accessibility so that playground amenities are more accessible for children with mobility challenges. All site preparation work will be provided by the successful bidder.

**The opportunity closes June 30<sup>th</sup>, 2026 2:00pm PST**

Questions can be directed to the Chief Administrative Officer, Derek Kwiatkowski, [cao@salmo.ca](mailto:cao@salmo.ca).

### KP Park Summary

The KP Park portion of the project will extend the existing sidewalk that leads into the washroom building around the side of the building leading to the circular concrete pad "racetrack" & will lead up a newly installed "Activity Board" playground feature. The newly installed sidewalk will be a low profile & match the height of the existing sidewalk. The sidewalk at the front of the washroom building will be 6' in width. The pad area would be a total of approximately 350m<sup>2</sup>.



Approximate KP Park Sidewalk Location (3 pictures)





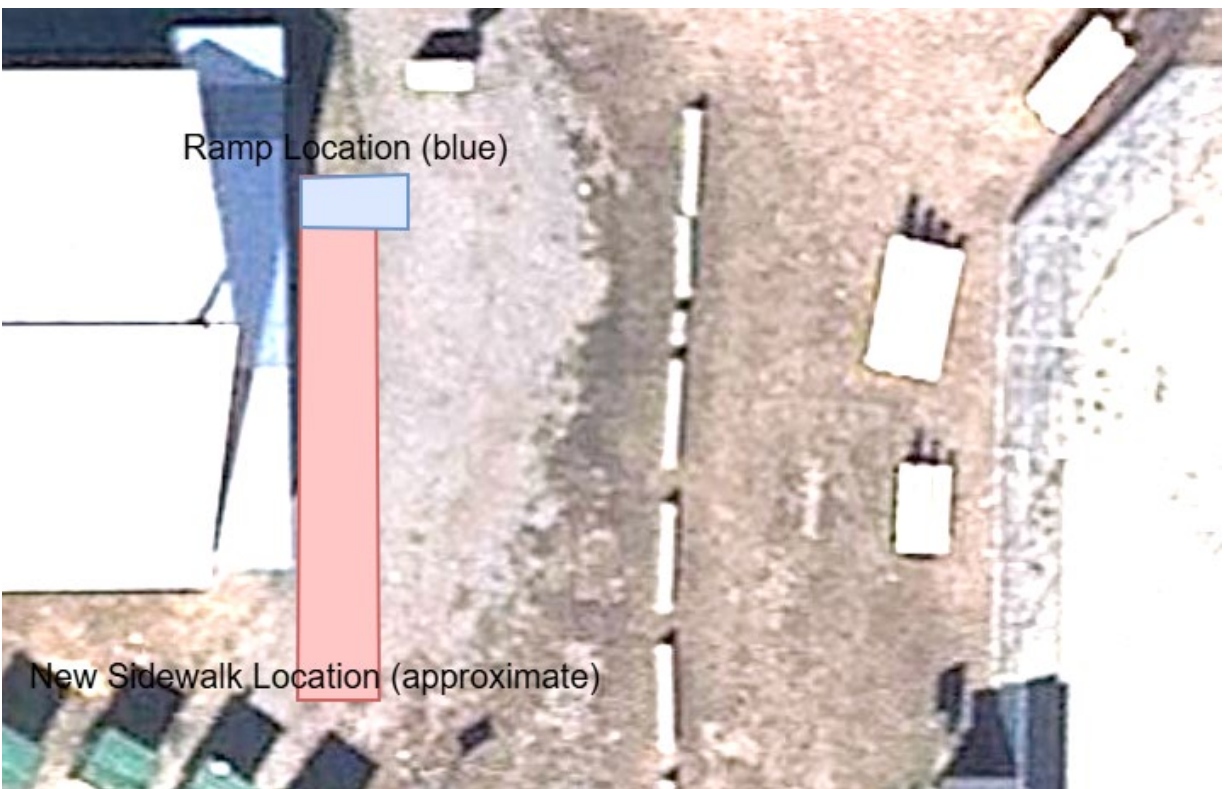


## Lion's Park Summary

This sidewalk will act as an access point from the Lion's Park parking lot to the accessible playground equipment within the playground. The playground is elevated due to the existence of underground infrastructure underneath the playground, but it does not affect any installation considerations. The sidewalk will run in between the playground and the curling rink & include an incline that is approximately 11" from the ground level to the height of the playground. This would be accomplished by a 90-degree turn from the sidewalk into the playground.

The sidewalk would be 6' in width & 60' in length, with the total area of approximately 38m<sup>2</sup>.

## Lion's Park- RDCK Mapping w/o Playground



**Google Map 2025- Includes Playground Location**



**Approximate Lion's Park Sidewalk Location (3 pictures)**





**Approximate Ramp Location**

